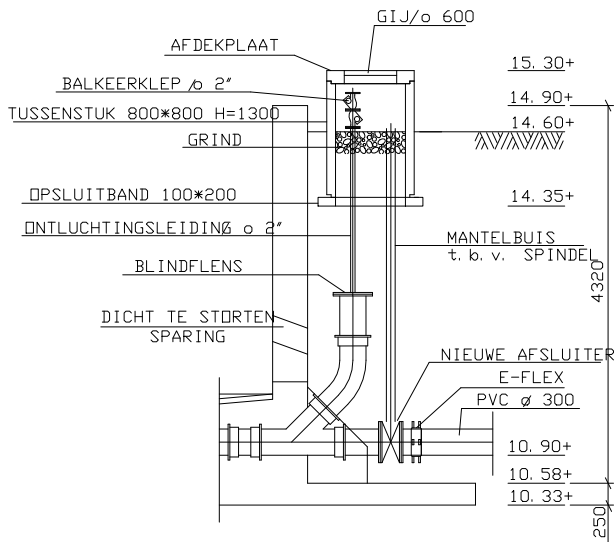
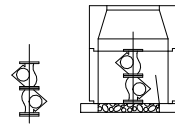


HOOGTEMATEN IN METERS T.O.V. NAP		LENGTEMATEN IN MILLIMETERS	
Schaal: 1:100/1:50/1:10	aanpassen tek. aan Bommel layers		
Get.: T.A.C.	22-06-'99		
Gez.: 00-00-00			
Gez.: 00-00-00			
Verke: RWZI TILBURG-NOORD			
Onderdeel: VOORGEZINKTANKS 1,2,3			
BOUWZAKEN		Formaat Tek.Nr:	
WATERSCHAP DE DOMMEL		A0 70801.04.049	
Postbus 10.001, 5280 DA Bortel		841 x 1189 (03.3.3.0005)	



DETAIL 9

SCHAAL 1: 50

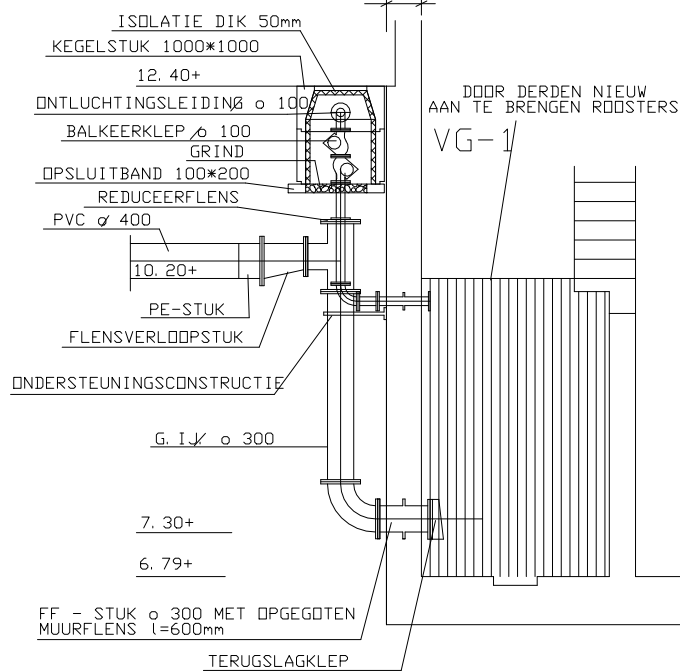
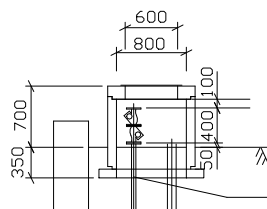
70801. 04. 052 blad 1

**TAC** Tilburgse Afvalwater  
Consultants v.o.f.

VOORBEZINKTANKS DETAIL 9  
TB-N. 03. 4. 3/14002

DATUM: 15-10-1993

T9310007



DOORSNEDE B

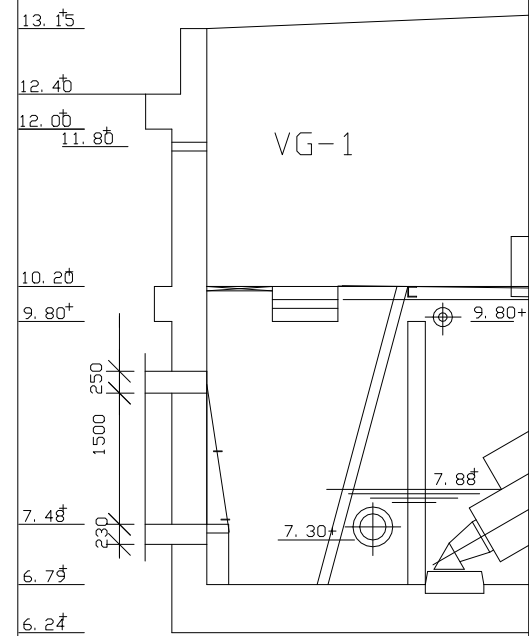
SCHAAL 1: 50

70801. 04. 052 blad 2

**TAC** Tilburgse Afvalwater  
Consultants v.o.f.

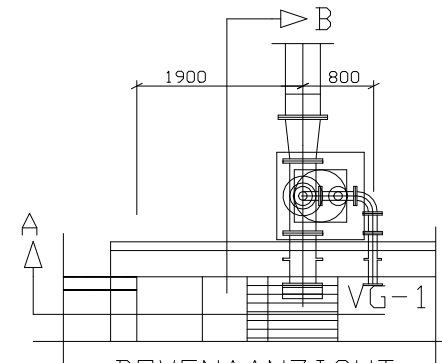
VOORBEZINKTANKS DETAIL 7  
TB-N. 03. 4. 3/14001  
blad 2 van 2  
DATUM: 12-10-1993

T9309005



DOORSNEDE A

SCHAAL 1: 50



BOVENAANZICHT

SCHAAL 1: 50

70801. 04. 052 blad 3

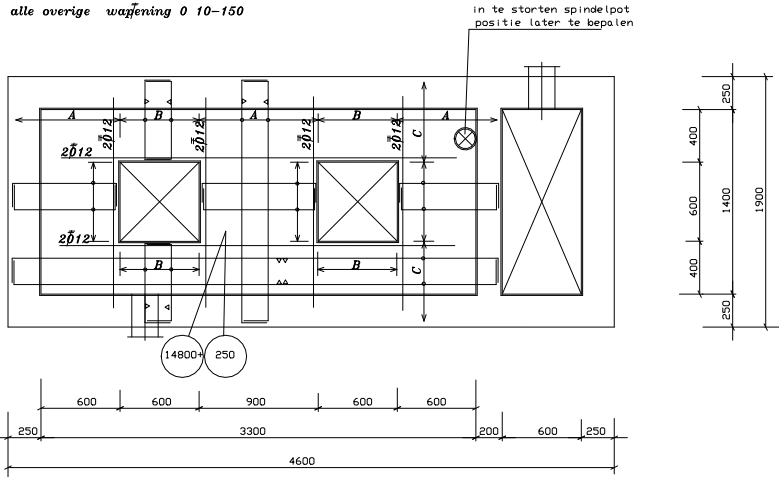
**TAC** Tilburgse Afvalwater  
Consultants v.o.f.

VOORBEZINKTANKS DETAIL 7  
TB-N. 03. 4. 3/14001  
blad 1 van 2  
DATUM: 12-10-1993

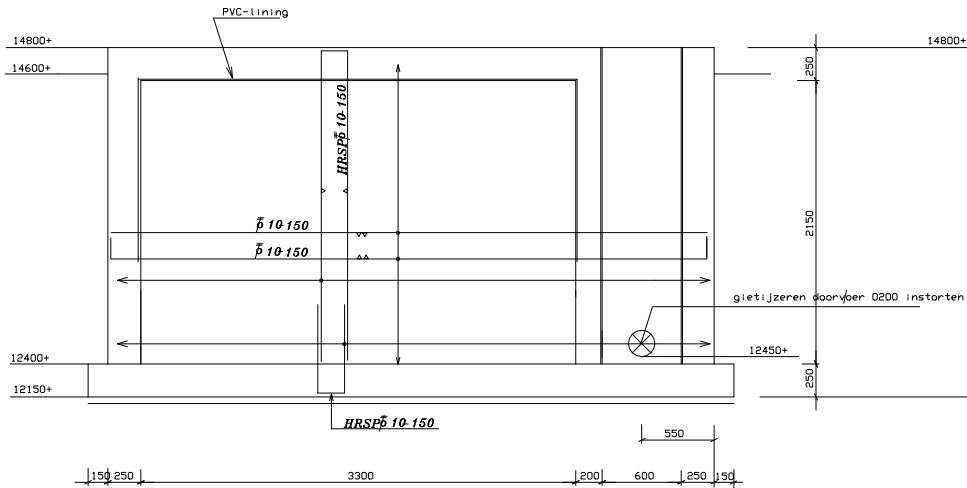
T9309005

DEK DRIJFLAAGPUT op 14800+

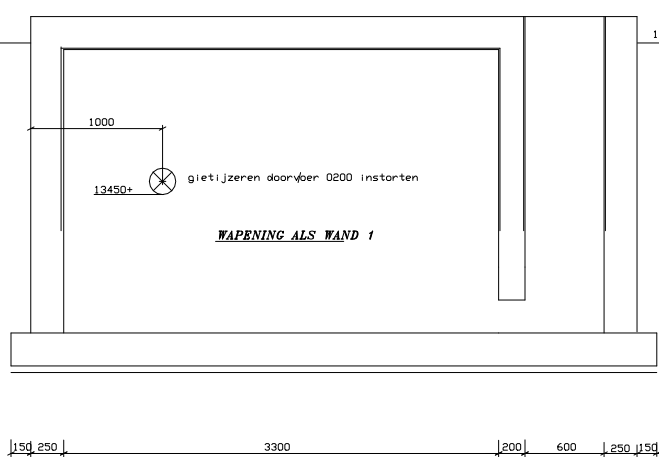
alle overige wapening 0 10-150



WAND 1

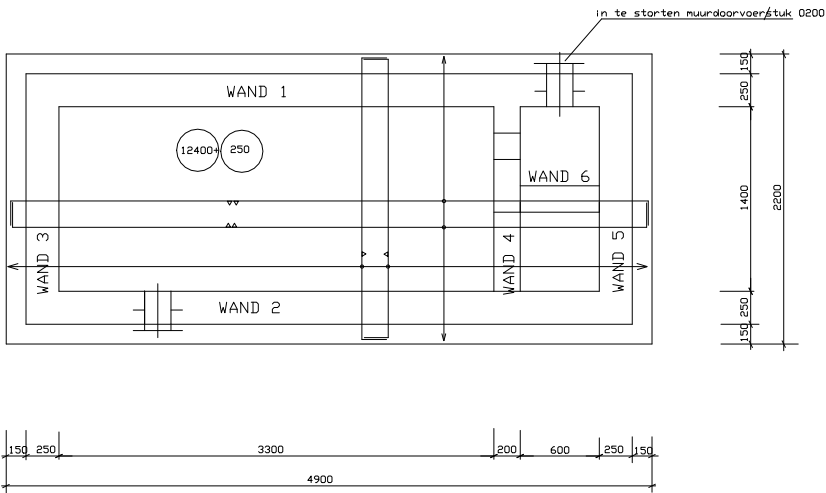


WAND 2

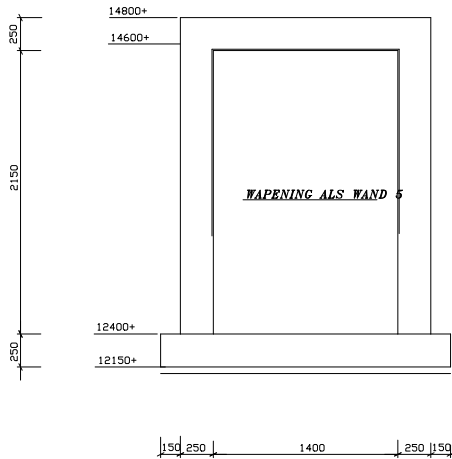


BODEM DRIJFLAAGPUT op 12400+

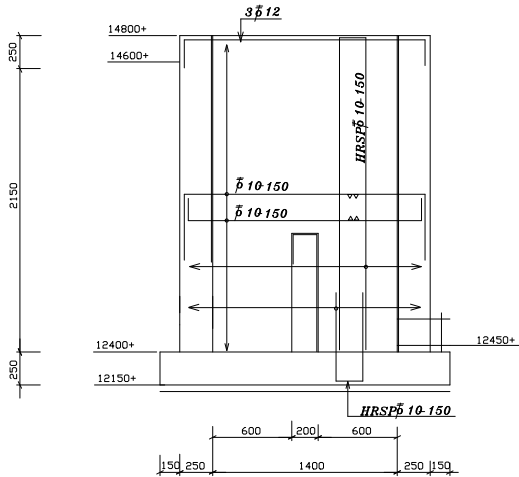
alle wapening 0 10-150



WAND 3



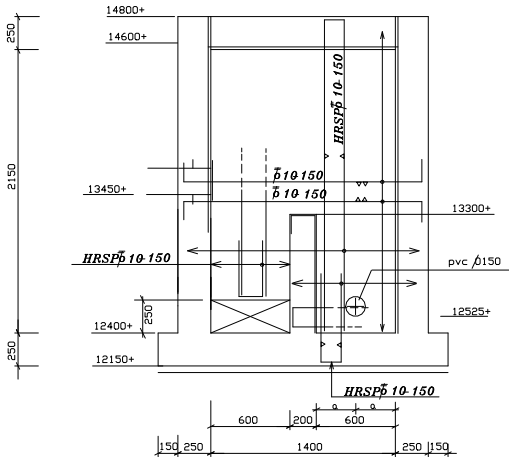
WAND 5



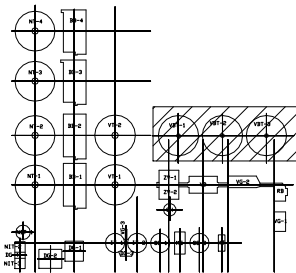
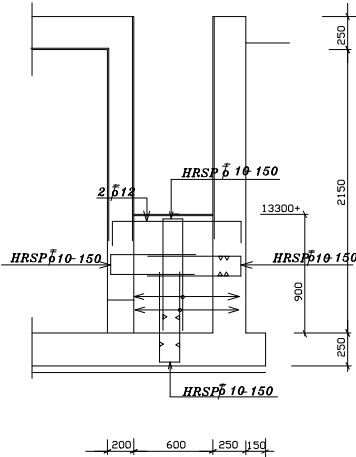
GEWAPEND BETON	STERKTEKLASSE	B25	BETONSTAL	Fck500
MILIEUKLASSE	5d			
CONSISTENTIEGRAD	max. 3			
CEMENT	soort	hoogoven		
KLASSE	A			
GEWAP.				
ONTKRISTEN VOLGENS V.B.				
BETONBODICHTING IN MM.				
VLDEREN	BEVE	ONDER	ZIJWANT	
WANDEN	30	25	30	
KOLMEN	30	25	30	
KOLMEN				

UITSLUITEND VOOR WAPENING

WAND 4



WAND 6



LEGENDA:

MATEN IN MM.  
VELLINGKANTEN 15x15

WAPENING

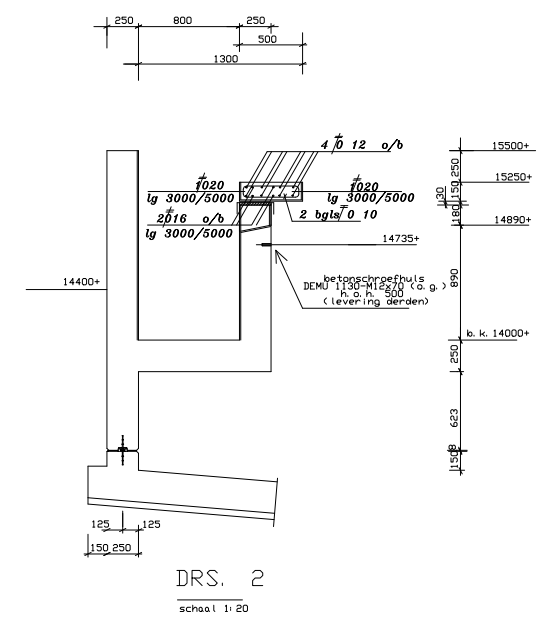
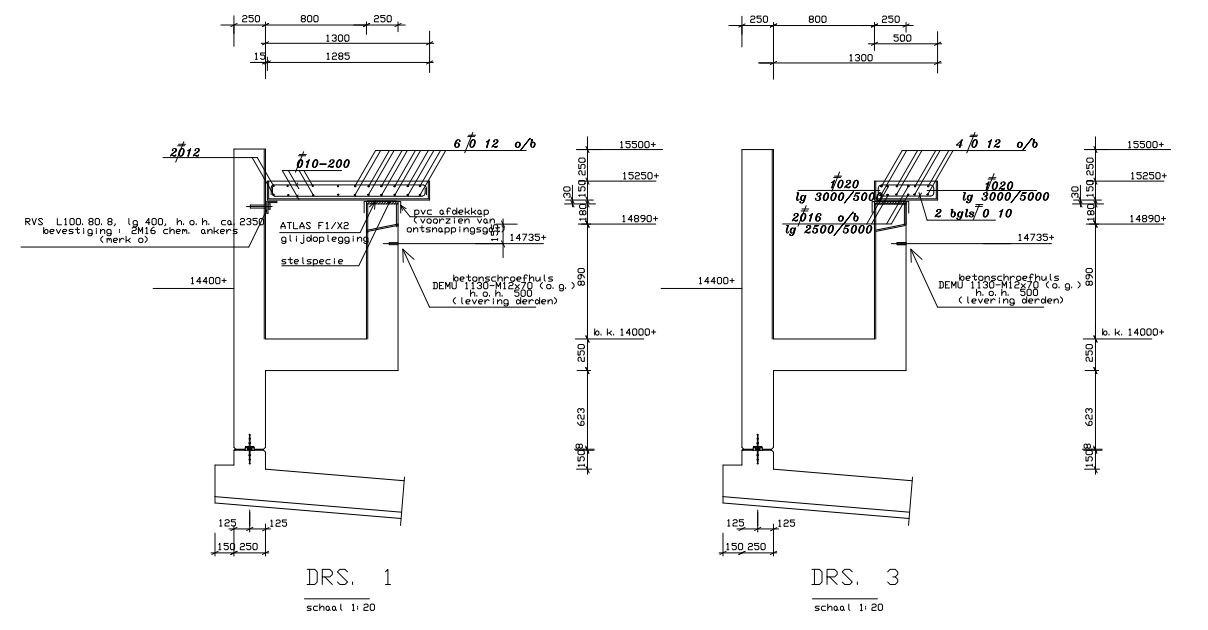
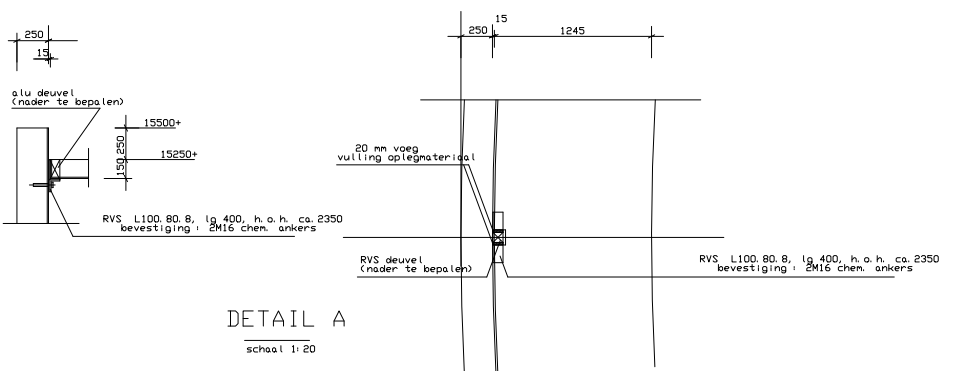
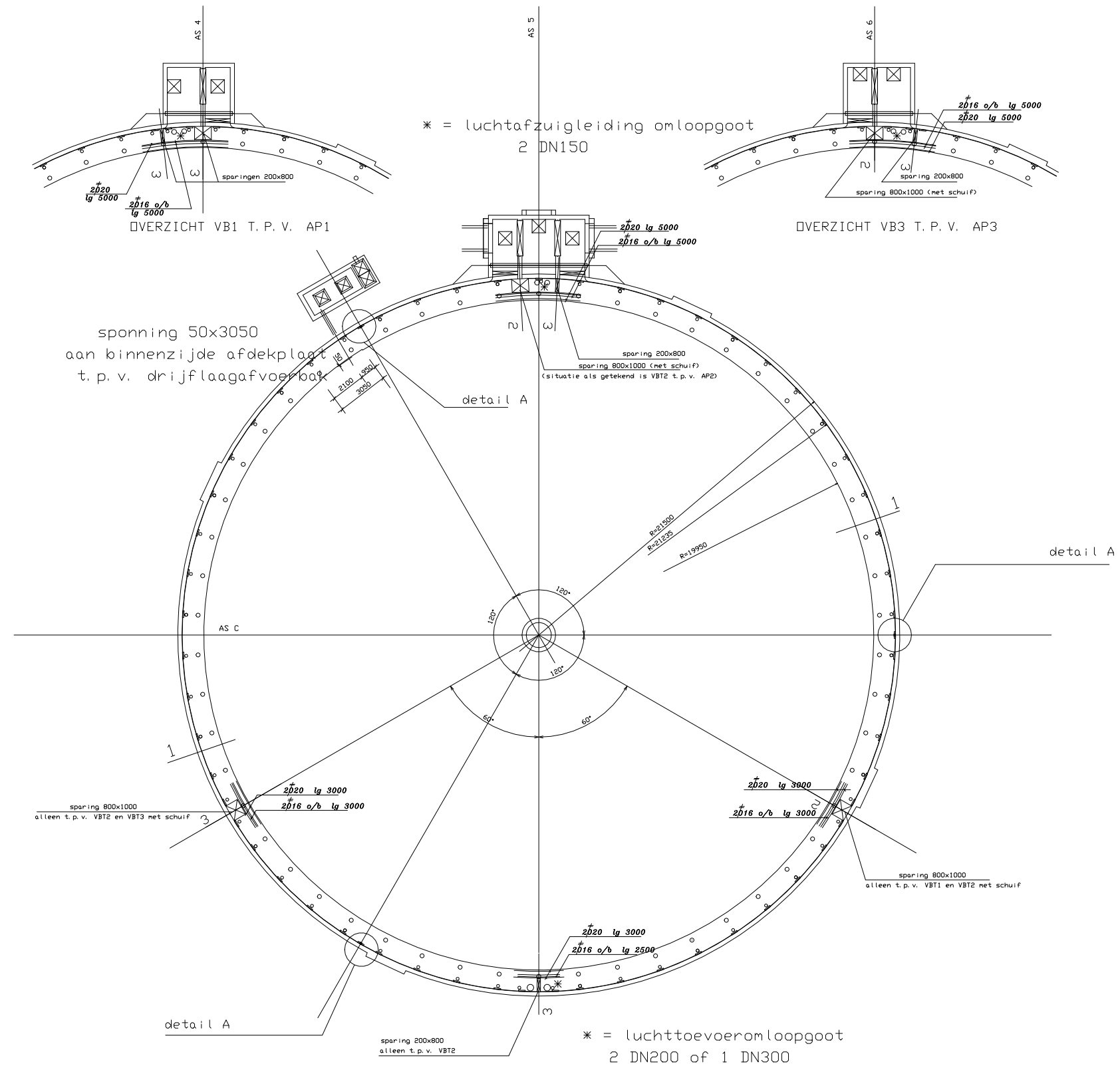
PVC-lining tot 13100+ tenzij anders is aangegeven

OPDRACHTGEVER:	MILIEUDIENST TILBURG				
A. W. R. I. TILBURG NOORD					
VOORBEZINKTANKS, VBT 2, 3					
drijfslagputten DP-2, 3					
Ontwerp	M. A. P.	Schets	1: 20		
Beoordeling					
Gegeven					
Datum	1993-10-14	Formaat	A0		

TZG  
Schouwburgsing 87  
5038 TK Tilburg  
Telefoon (013) 321050  
Telefax 440090

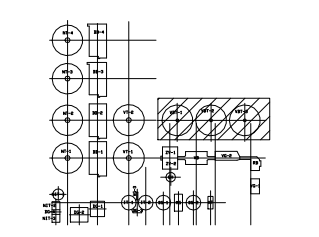
M. A. P.  
70801.04.054  
(03.4.6.4008)  
Breedte  
Formaat A0





GEWOND BETON	STREKCLASSIE	B25	BETONSTAF	Rw600
MILIEUKLASSE	5d			
CONSISTENTIEGRAD	max. 3			
CEMENT	ROBT	hoogoven		
KLASSE	A			
GEWALTE				
BEVESTIGINGEN V.B.				

UITSLUITEND VOOR WAPENING



MATEN IN MM.  
VELLINGKANTEN 15x15  
LEGENDA:

WAPENING

SCHUIVEN EN LUIKEN:

- VBT1: 3 st. 800x1000  
1 st. 800x200
- VBT2: 3 st. 800x1000  
2 st. 800x200
- VBT3: 3 st. 800x1000  
1 st. 800x200

T. P. V. SCHUIVEN:

BIJ GOOTWANDEN OPBOUW TROVIDUR-FRAME  
SPONNING IN GOOTBODEM

OPDRACHTGEVER:  
MILIEUDIENST TILBURG

A. W. R. I. TILBURG NOORD  
VOORBEZINKTANKS 1, 2, 3  
gootbodes (15500+)

Tilburgse Afvalbeheer  
Schiedamschedijk 87  
5048 TK Tilburg  
Telefoon (013) 381050  
Telefax 440090

Getekend RB  
Gecontroleerd 70801.04.056  
Gedrukt VDL  
Datum 1994-04-26 RB

HOOGTEMATEN IN METERS T.O.V. NAP LENGTEMATEN IN MILLIMETERS

Schaal 1:100

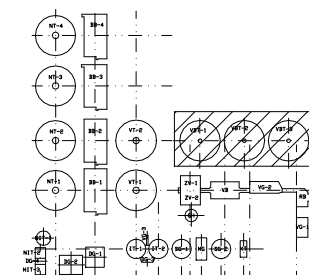
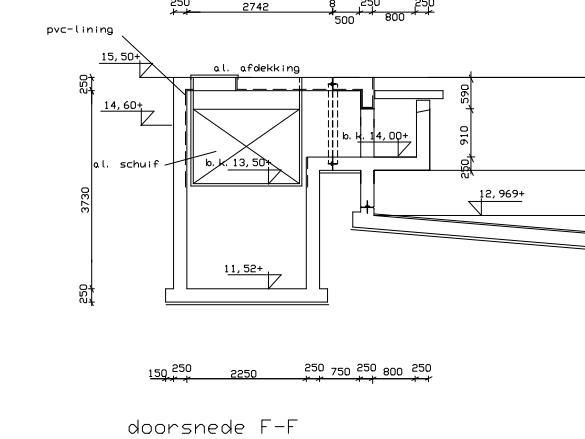
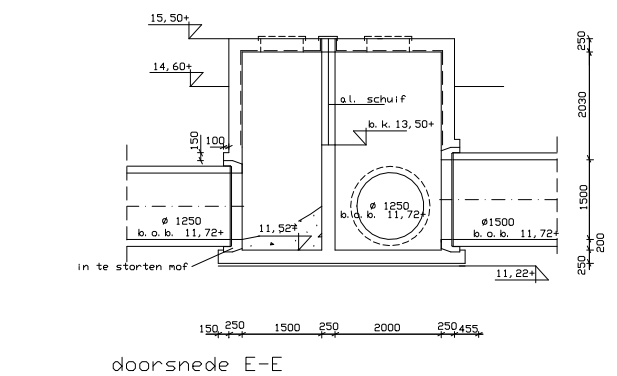
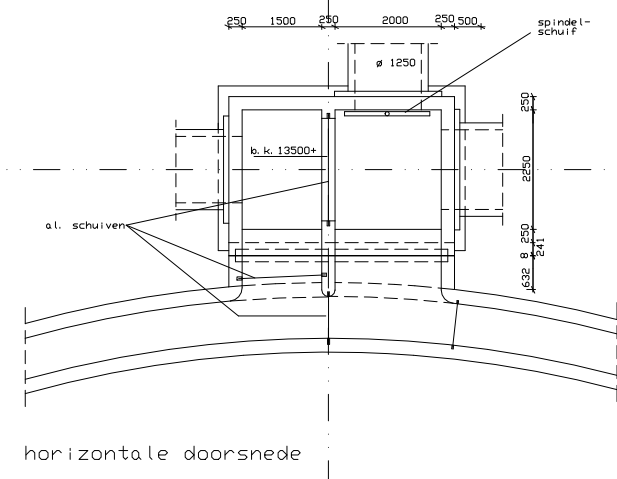
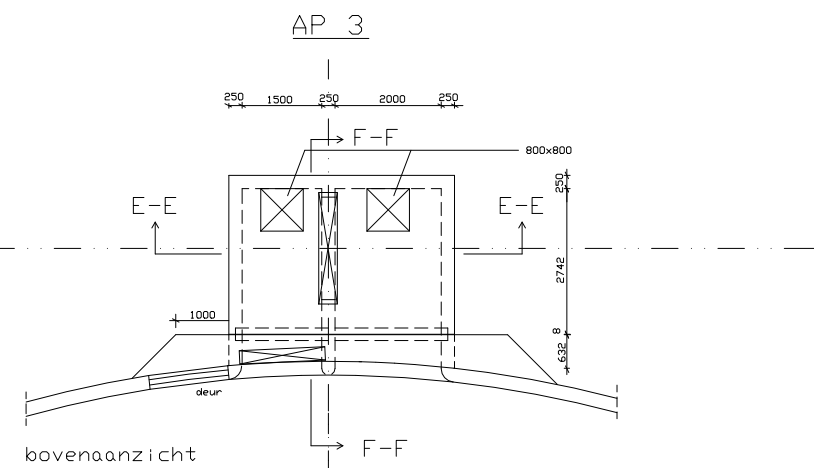
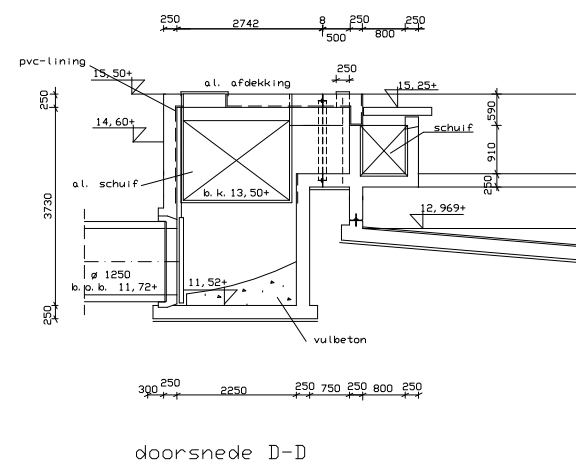
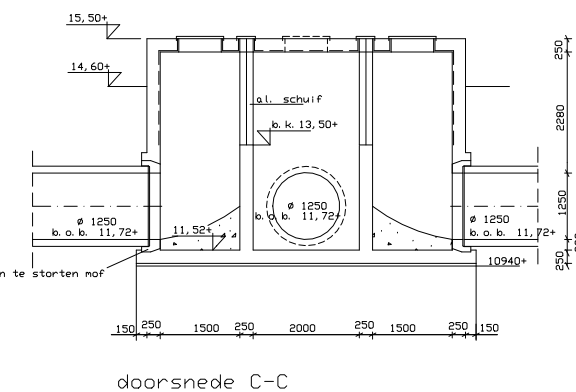
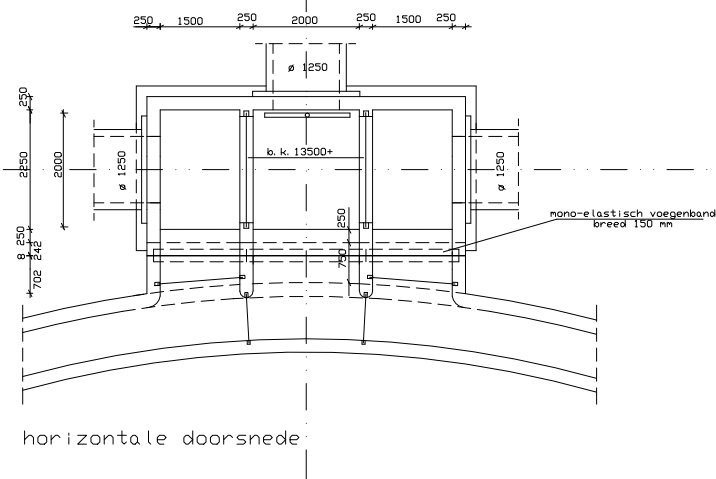
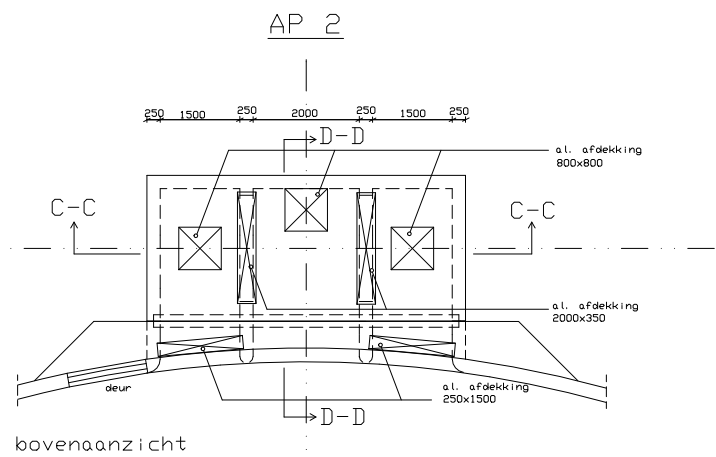
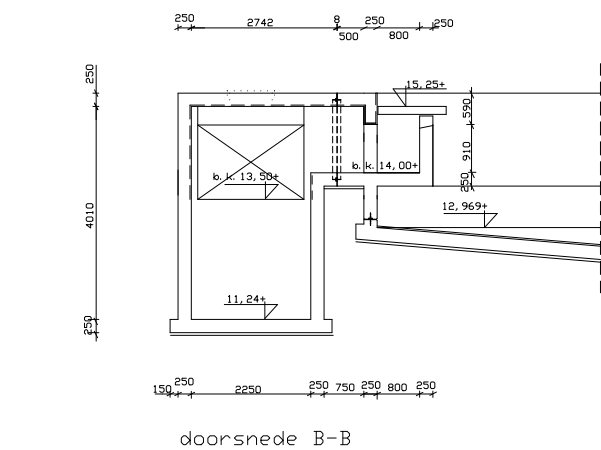
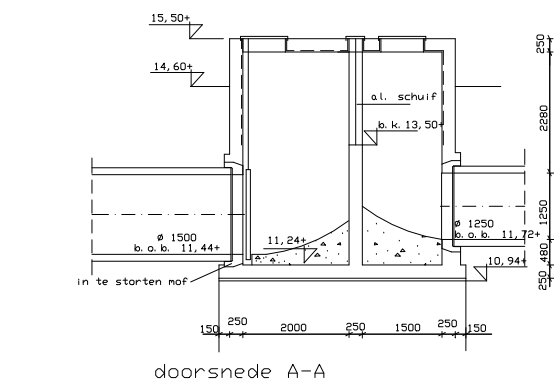
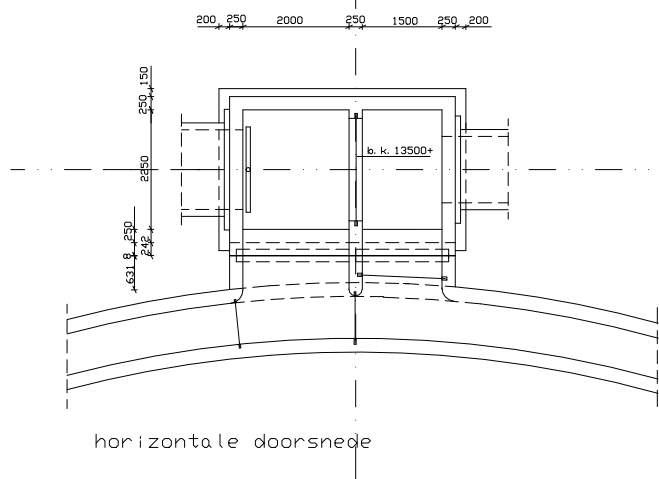
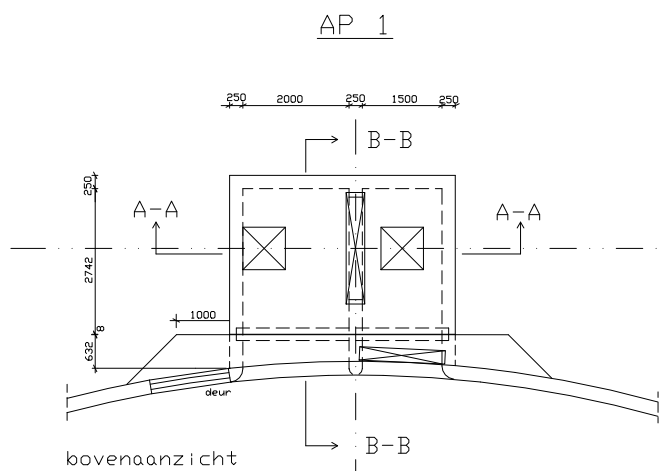
Get: TAC  
Gec: 26-04-1994  
Gez: 00-00-00  
Gez: 00-00-00

Ver: MILIEUDIENST TILBURG

Onderdeel: VOORBEZINKTANKS 1,2,3

Waterschap De Dommel  
Boescheweg 56  
Postbus 10.001  
5280 DA Boxtel

Formaat Tek.Nr.  
A0 70801.04.056



LEGENDA:

MATEN IN mm.  
HOOGTEMATEN IN mm t.o.v. NAP.  
VELLINGKANTEN 15x15

HOOGTEMATEN IN METERS T.O.V. NAP		LENGTEMATEN IN MILLIMETERS	
Schaal: 1/50	Get.: TAC	Gez.: 00-00-00	Verk.: NOV. 2001
Gez.: 00-00-00	Verk.: NOV. 2001	AFVORDERPUTTEN AP 1,2,3	
BOUWZAKEN WATERSCAP DE DOMMEL		Formaat: A0	Tek.Nr.: 70801.04.063
Postbus 10.001, 5280 BA Bortel		841 x 1189 (03-3.3/3006)	